

# Inlay, Onlay & Veneers NEW

## As simple as designing a coping

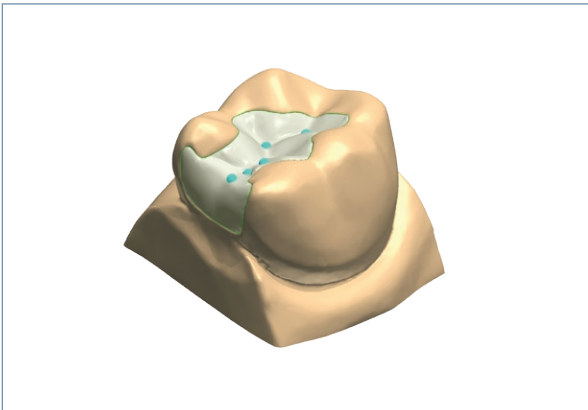
The 3Shape Dental System™ fully supports the design of inlays, onlays and veneers, including automatic anatomy morphing. With these new important indications, labs can increase return on investment of their CAD/CAM system.

DentalDesigner™ makes even the most complex designs straightforward with its automated, intuitive design process. Technicians can design single inlays, onlays, veneers and inlay bridges quickly and more accurately than possible with manual design methods.

During each phase of the design process, DentalDesigner™ **calculates and intelligently suggests appropriate designs** and selections, be it insertion direction, margin line, removal of undercuts, anatomical shape or contact antagonist to neighboring teeth.

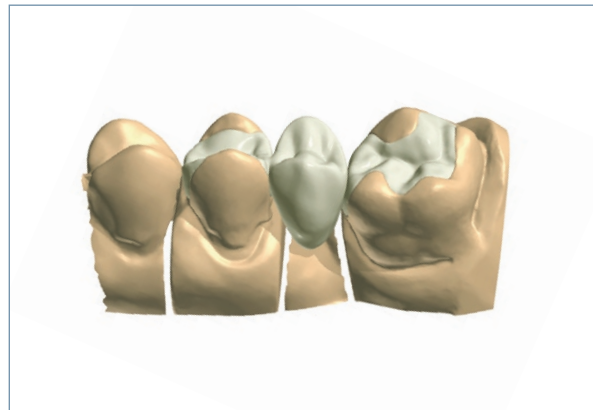
Once the technician has selected the appropriate tooth anatomy from the extensive built-in library, the program starts the **automated integration and approximation**. To create an optimal anatomical shape of the inlay, onlay or veneer, the shape is automatically morphed to match the original anatomy of the treated tooth, the proximal and antagonist surfaces.

Yet, all of this automation doesn't mean that designs are inflexible. Technicians can also modify suggested anatomy designs using the state-of-the-art sculpt toolkit.



**Inlay, onlay & veneers**

*Automated morphing - anatomy approximation.*



**Inlay & Maryland bridges**

*Unique freeform flexibility through sculpt toolkit.*

### HIGHLIGHTS

- **Anatomical design** - automatic approximation of tooth anatomy
- **Unique fit** - from the D700's 2 cameras and 3-axis scanning
- **Freeform shaping** - multidirectional freeform shape and morph toolkit
- **Modeling** - structured design methodology - step by step guidance