

D700 Impression Scanning NEW

From impression to digital model

The D700 scanner delivers high quality impression scans, representing a noticeable advancement in digital dentistry. A combination of 3-axis, 2 cameras with optimized angle and 3Shape's patented adaptive scanning technology enables the D700 to scan even deep incisor preparations.

Direct scanning of silicone and alginate impressions represents a truly unique opportunity for work **process optimization and cost saving** to labs and large-scale dentists.

Traditional time-consuming, dusty and less accurate model making steps can now be eliminated by instantly going from physical impression to a high accuracy digital model. Impression scanning drastically **reduces turnaround time** by allowing immediate start on CAD design and parallel manufacturing of model, coping and crown - In some clinical cases the model might not be needed at all.

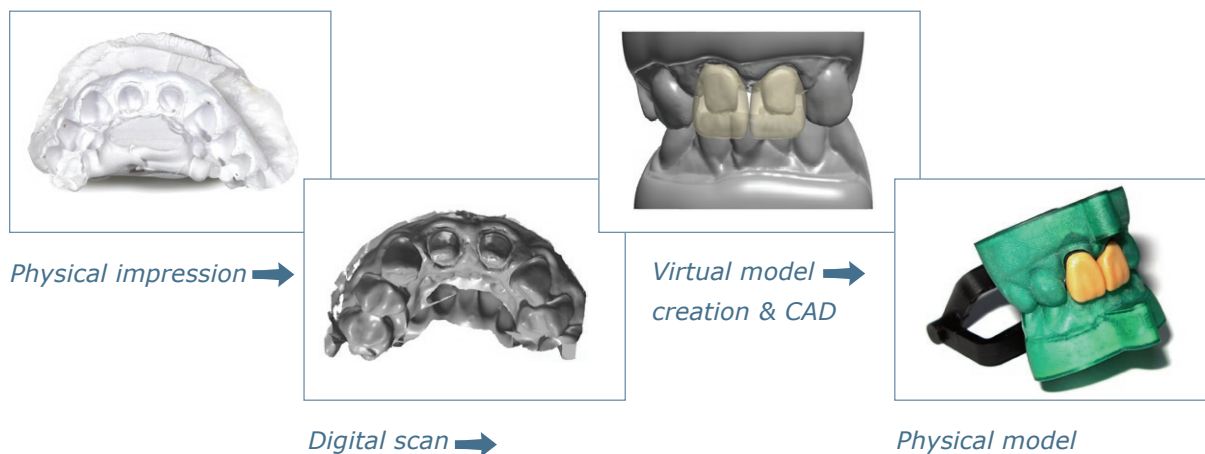
Impression scanning capability is realized through an unparalleled combination of 3Shape's patented **adaptive scanning technology and 2 cameras** with reduced angle. Adaptive scanning intelligently detects incomplete areas and

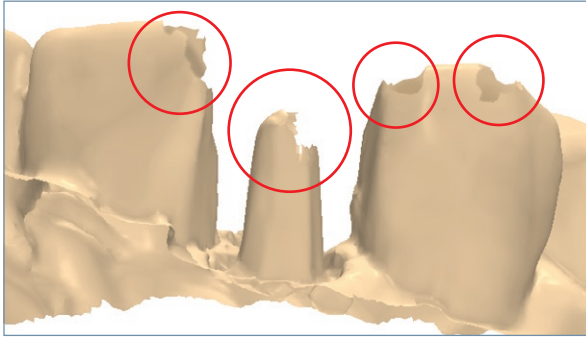
automatically rescans these areas to obtain full coverage.

The immediate digitalization of the impression offers a unique opportunity to initiate client & lab case communication faster, particularly when scanning in the dentist's office.

The created virtual model – saved as STL – is sent to digital **model making machines**, which are currently evolving rapidly, driven by impression and intra oral scanners. Both 3D printing and milling offer attractive opportunities in terms of manufacturing cost, model creation speed and quality.

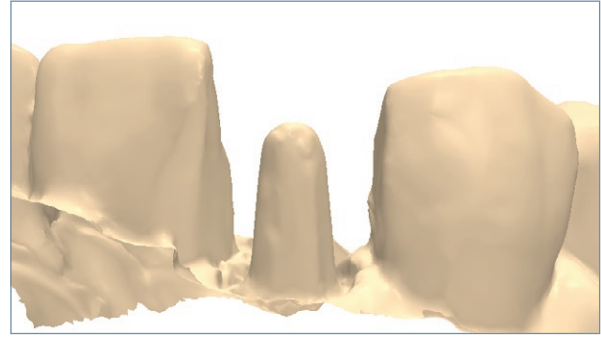
The impression scan can be applied directly in 3Shape DentalDesigner™ like any gypsum model scan and sets new standards for system applicability.





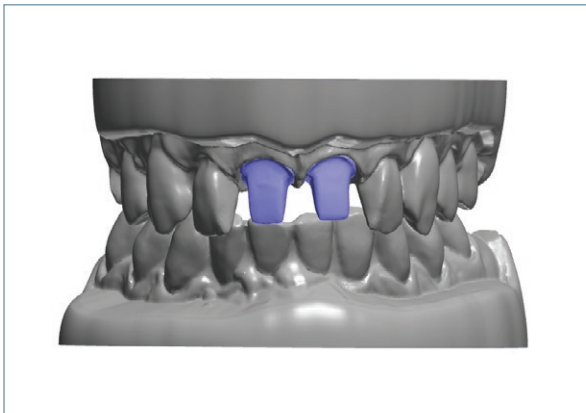
Before adaptive scanning

The scan result is incomplete in the preparation, proximal and contact areas, which will jeopardize fit and clinical performance.



After adaptive scanning

A complete and high accuracy scan after adaptive scanning of incomplete areas automatically applying the optimal combination of 2 cameras and 3-axis.



Advanced virtual model creation

Turn the impression scan to a virtual model by applying tools for articulation, trimming of scan, base creation, sectioning of preparations (preserving gingival) and articulator interface.



From virtual to physical model

3D printing and milling offers attractive opportunities for model making reducing manufacturing cost, model creation time and improving quality.

HIGHLIGHTS

- **Scan time** - posterior preparation & neighbours: 200 sec + antagonist & alignment: 100 sec
- **2 Cameras + 3-axis** - required for effective scanning of impressions including incisors
- **Adaptive scanning** - ensures complete scans resulting in high quality fit and clinical result
- **Increased accuracy** - from the elimination of inaccurately poured gypsum models
- **Reduced model making cost** - by model making machines and overall fewer physical models
- **Virtual model creation tools** - enables high quality virtual and physical models
- **Improved turn-around time** - by manufacturing of model and crown/bridge in parallel