

Copings & Bridge Frameworks

Productive and flexible inside-out modeling

Productivity is at the core of 3Shape Dental System. Thanks to a number of automated positioning and modeling features, it can take as little as 2 minutes from order creation to completed design of a single coping, ready for manufacturing. This enables a large lab to create more than 100 units per day.

To **boost productivity**, all selected production parameters are preset for the material and equipment chosen at the time the order is created. The completed framework design is, therefore, just a few mouse clicks away.

The new sculpt toolkit in DentalDesigner™ gives the technician the option to improve esthetic and functional performance on critical features such as the copings, pontics and connectors.

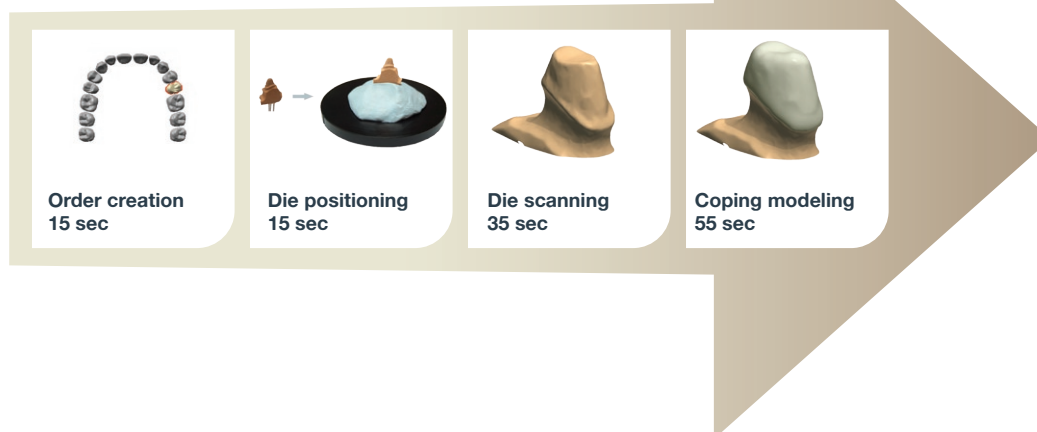
The System's **powerful algorithms** automatically detect the margin line. The System is also

flexible, allowing the user to modify the preset-line with built-in design tools; such as the "fast edit" and the "red pencil", which in effect replicates the red pencil used on models in the lab.

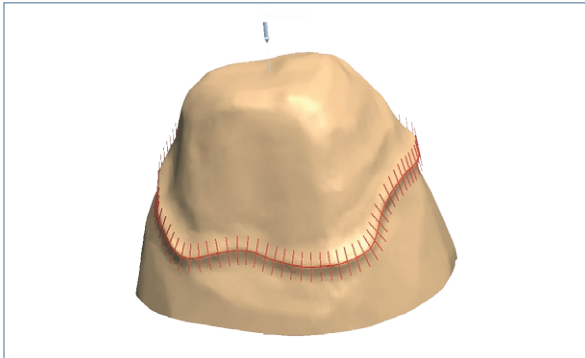
The System also **positions the design elements automatically**, so framework design really is about fine-tuning the System's suggestions.

Finally, several connector editing tools enable the creation of connectors with optimized mechanical and esthetic properties.

TOTAL TIME FOR COPING CREATION: 2 MINS

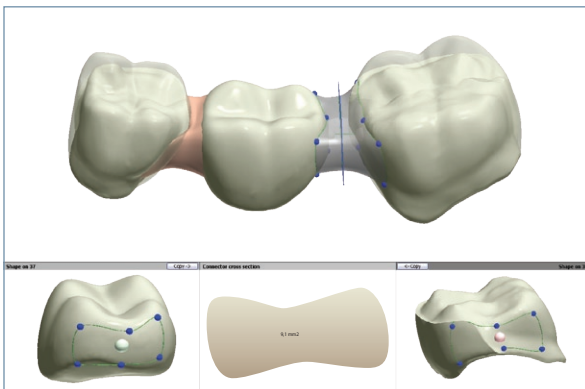


3Shape optimizes your complete workflow - 2 minutes is enough to create a standard coping from order creation to completed design.



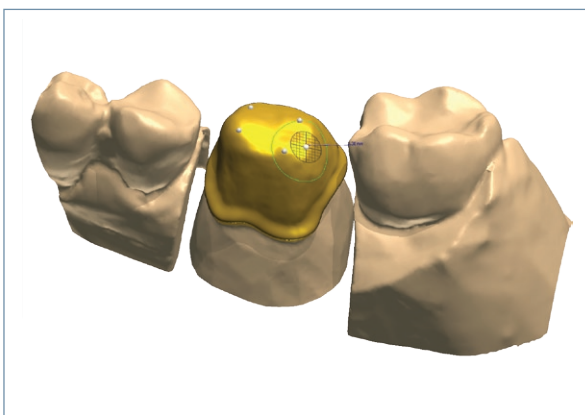
Red pencil margin detection and edition

Fast and automatic margin line detection with advanced algorithms, which simulate the dental technician's 'red pencil'. The automatically detected margin line can be edited in a few clicks, or its overall position can easily be adjusted.



Advanced connector design

Have full control of the connector's interface profile, curvature and thickness in order to optimize esthetic and mechanical properties.



Powerful Sculpt Toolkit

NEW

The new Sculpt Toolkit allows for unmatched freeform modeling of the coping overlay and pontic. The Toolkit includes a number of tools (wax knife, freeform, morphing, transformation and automatic), which give complete control over all critical aspects of the design process.

HIGHLIGHTS

- **Sculpt Toolkit** - new powerful freeform sculpt tools
- **Automatic positioning** - of design elements (copings, connectors, pontics)
- **Easy modification** - of automatic suggestions
- **Red pencil margin detection** - anatomic margin detection and fast editing tools
- **Connector design** - flexible and advanced connector design