

# Full Anatomical Modeling in DentalDesigner™

Optimize productivity, strength and esthetics with a few clicks

With its new functionalities, DentalDesigner™ offers the most advanced and efficient tools for full anatomical crowns and bridges modeling. Based on full anatomies, extensive indications are offered to create highly esthetic and functional restorations.

In order to deliver optimal productivity and clinical performance in crown and bridge creation, DentalDesigner™ offers extensive indications:

**Full anatomical crowns** – automatically morphed to precisely fit the clinical situation. Full crowns can for example be milled in glass ceramics or be used as temporary restorations.

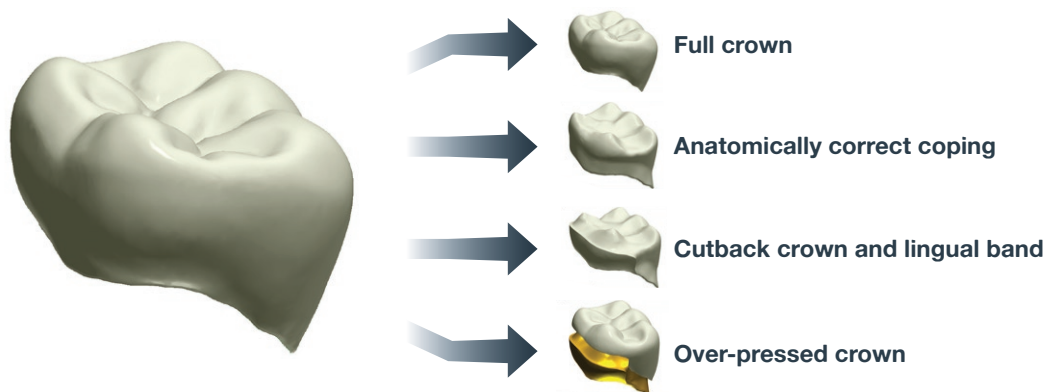
**Anatomical correct copings** - reduced from the full anatomical crown, creating anatomical copings and frameworks with excellent ceramic support and improved restoration strength.

**Cutback crowns and freeform lingual bands** – producing sophisticated cutback crowns and

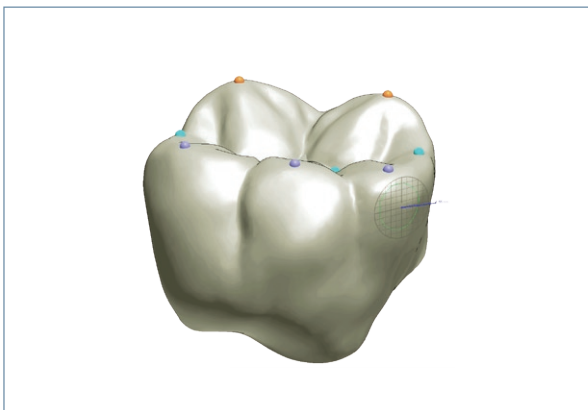
lingual bands following the anatomical shape, and anatomical copings on the remaining crown for superior ceramics support.

**Over-pressed crowns and bridges** - exports a file for the anatomical correct coping and a second one for the wax pattern. Directly pressed ceramics offer an efficient solution for full CAD/CAM crowns significantly reducing cost.

DentalDesigner’s new automatic modeling functionalities pre-position the morphologies and **automatically adjust** them to the antagonist and proximal dentition. The powerful freeform Sculpt Toolkit delivers unprecedented freedom and efficiency in crown sculpting.

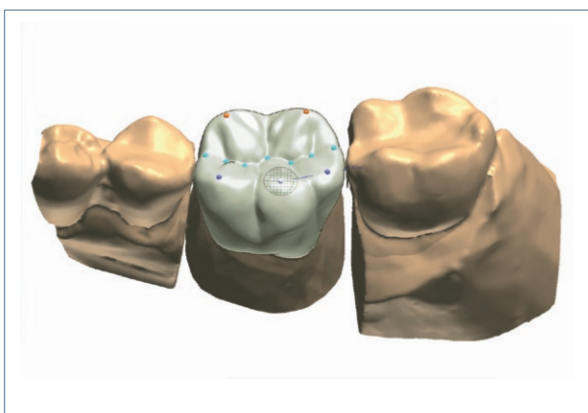


**Extensive indications** - With DentalDesigner™, anatomical restorations can be modeled using several alternative techniques: anatomical copings, full anatomical crown, cutback crowns and freeform lingual bands and finally overpressed crown and bridges.



### Powerful Sculpt Toolkit **NEW**

*This new toolkit gives technicians maximum design flexibility with freeform tools; including wax knife, morphing (consisting of the unique silhouette morphing), global transformation (with many efficient tools to easily resize the crown in place), and automatic routines that directly modify the chosen crown.*



### Crown automation **NEW**

*DentalDesigner™ automatically pre-models the tooth anatomy in place by optimally adapting it to the antagonist and neighboring dentition.*



### Customized morphologies

*3Shape recognize the fact that every tooth is unique. Users can scan their preferred morphologies from wax and set them up for direct use in DentalDesigner, or apply the 12 available libraries - including the Heraeus Premium morphologies.*

## HIGHLIGHTS

- **Sculpt Toolkit** - advanced freeform modeling tools
- **Crown automation** - automatic crown positioning and modelling for productivity
- **Extensive indications** - derived from the full anatomical design
- **Tooth morphologies** - a large number of available tooth morphologies
- **Customized morphologies** - easy creation of own tooth morphology library