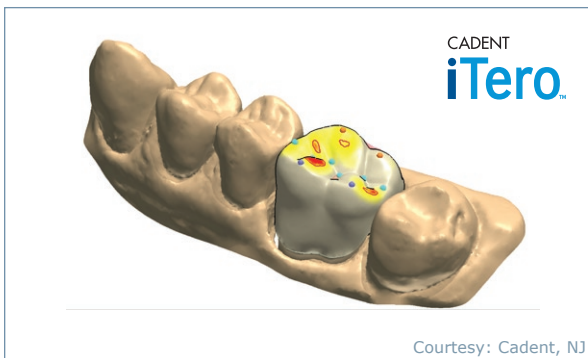


Additional Indications

Intuitive software that works the way you do

3Shape Dental System offers a number of additional indications and features making 3Shape the most advanced and versatile dental CAD/CAM system available.

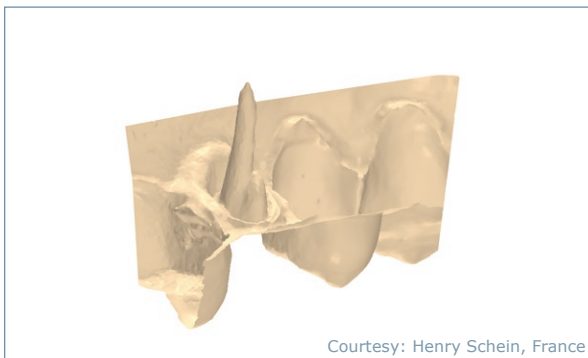


Courtesy: Cadent, NJ

Full crown designed on iTero scan.

Imported scans from intra oral scanners NEW

Intra oral scanners are likely to become a key component in the future of dentistry. It is already possible to import and work directly on scans from open intra oral scanners such as iTero from Cadent.



Courtesy: Henry Schein, France

Post & core scan.

Post & core using impressions scanning NEW

The D700 scanner's impression scanning capabilities enable the scanning of post & core, something which is impossible on traditional gypsum scanners due to the narrow core. All the advanced 3Shape modelling functionality can be applied directly to the inlay core scan to complete the restorative work. Patent pending.



Examples of supported manufacturing equipment.

Widest Manufacturing integration

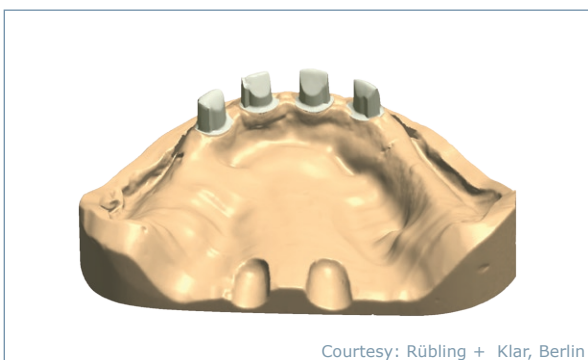
3Shape offers the widest integration to manufacturing equipment among all CAD/CAM system ensuring **3Shape customers access to the latest and most competitive technology.** In various configurations 3Shape Dental System™ integrates to more than 20 different machines including 3-5 axis milling machines, wax printers, laser sintering machines and digital model making machines. The actual interface is typically performed by customized output formats – not just STL – to achieve optimal performance.



Wax-up bridge scan.

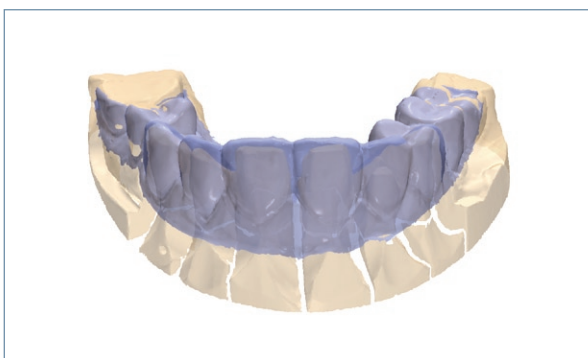


Combined design.



Courtesy: Rübling + Klar, Berlin

Telescopic crown case.



Pre-preparation aligned to preparation scan.

Copy milling of wax-up bridges

Enables high accuracy copy milling of complex and advanced wax designs by scanning the original wax-up design. The scan can be further modified (e.g: Overall reduction or using the sculpt toolkit, to make the most of the CAD/CAM investment).

Combine all CAD modeling in one session

The flexibility of DentalDesigner™ allows the user to design all restorations in the same modeling session, thereby improving efficiency and clinical result. For example, it is possible to design a standard bridge, full anatomy crowns and implant bridge in the same modeling session.

Telescopic crowns

Enables the creation of individually-modeled primary telescopic crowns based on pre-defined geometrical shapes, user-defined angle and common insertion direction.

Scanning of pre-preparation model and diagnostic wax-up

NEW

The pre-preparation model and diagnostic wax-up contains very valuable information for modeling of full anatomical crowns and general restorative work. Hence the **pre-preparation model and diagnostic wax-up** can now be scanned and aligned to the normal preparation scan and visualized during the design phase.